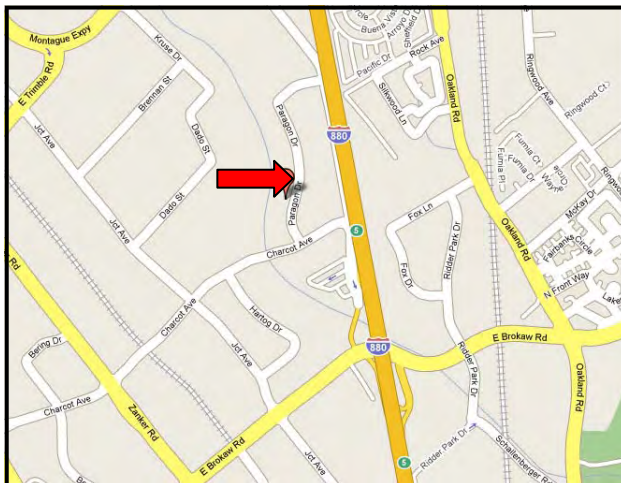




2231 Paragon Drive San Jose, California

- 6,700 Sq.Ft.
- +/- 20% Office
- (1) Grade Door
- \$.79 Ind. Gr.
- Available Now
- CALL TO TOUR!



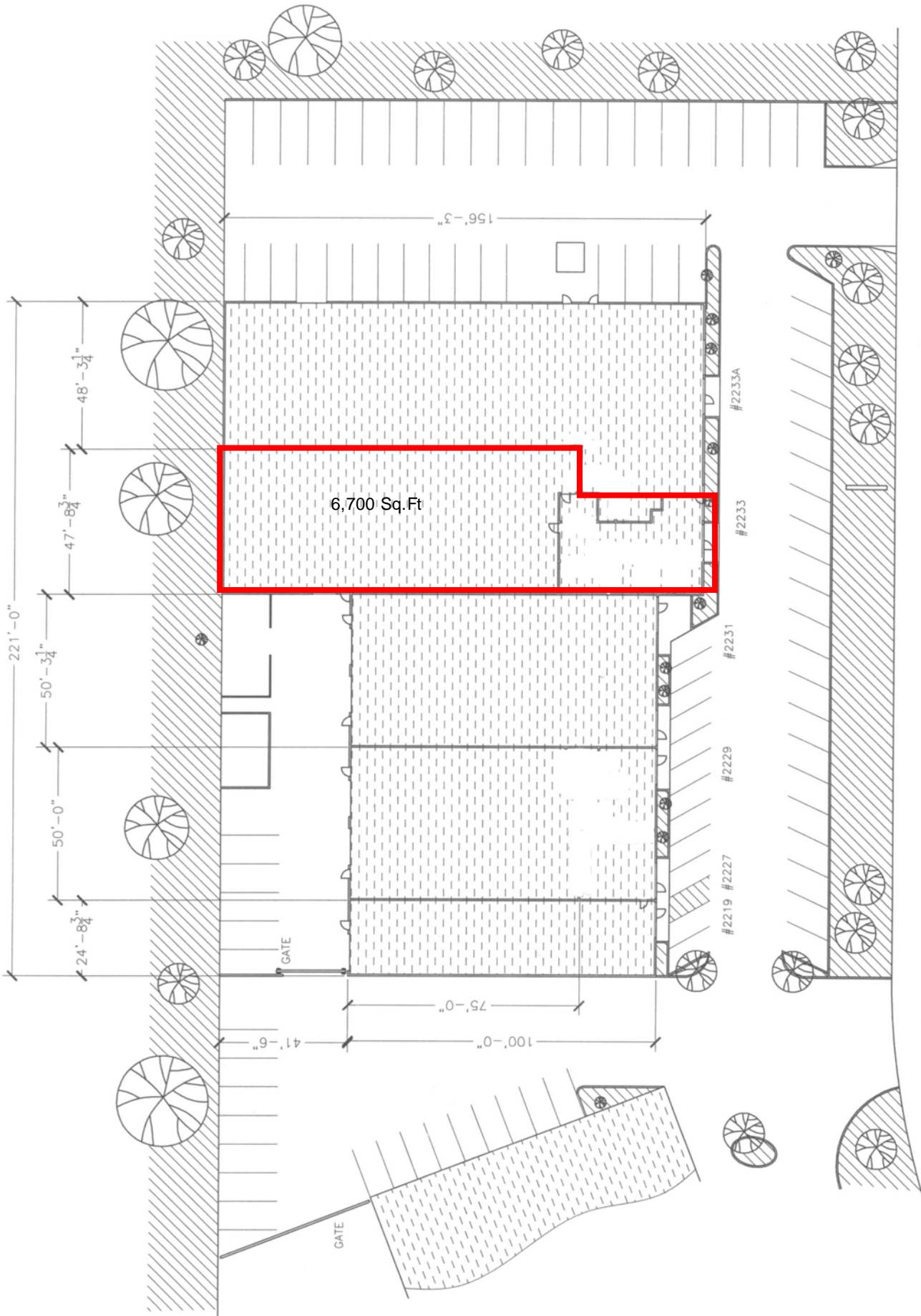
CONTACT EXCLUSIVE AGENTS:

JEFF PETULLA
 (408) 247-9460 Direct Line
 (408) 888-4859 Cellular
 Email: jpetulla@heilinc.com
 DRE# 00852399

DEAN CHESNUT
 (408) 988-9527 Direct Line
 (408) 505-7717 Cellular
 Email: equusdean@gmail.com
 DRE# 00887755

THE INFORMATION CONTAINED HEREIN HAS BEEN GIVEN TO US BY EITHER THE OWNERS OF THE PROPERTY OR SOURCES WE DEEM RELIABLE. WE HAVE NO REASON TO DOUBT ITS ACCURACY, BUT WE DO NOT GUARANTEE IT. NO WARRANTIES OR REPRESENTATIONS, EXPRESSED OR IMPLIED ARE MADE AS TO THE ACCURACY OF THE INFORMATION CONTAINED HEREIN, AND SAME IS PROVIDED SUBJECT TO ERRORS, OMISSIONS, CHANGE OF PRICE, RENTAL OR OTHER CONDITIONS, WITHDRAWAL WITHOUT NOTICE, AND TO ANY SPECIAL LISTING CONDITIONS, IMPOSED BY OUR PRINCIPALS. ALL INFORMATION SHOULD BE VERIFIED PRIOR TO LEASE OR PURCHASE.

FOR LEASE



6,700 Sq. Ft.



10 feet

TITLE	BUILDING
DRAWN	K. SHENG
DATE	07/18/2002

PARAGON DRIVE