

Office Space For Lease

~ 120 to 8,000 Square Feet

900 Lafayette Street, Santa Clara

DAYoder
Commercial Real Estate Services

Commerce Plaza

Move In Today!!



For Information Call

Doug Yoder

(408) 634-5606

Doug@dayoder.com

www.dayoder.com

DRE 660801

- 120 to 8,000 sf Available From \$1.75 FSG
- Executive Suites from \$600/month FSG (includes WiFi)
- High Speed Comcast Internet Available
- Major Banks, Courthouse, University a short walk
- Restaurants, Shopping, Post Office Close By
- Flexible lease terms from Mo/Mo



This information is presented to you with the understanding that it was gathered from sources we assume to be reliable. The broker has not made an independent verification. The broker makes no guarantee, warranty or representation to its accuracy. You must independently verify all information relating to sale, lease or financing of the property with your own advisors including contractors, architects, legal counsel, tax and accounting professionals, planning and other government agencies. Drawings are not to scale.

Floor Plans

2nd Floor Executive Suite

900 Lafayette, Santa Clara, CA



Executive Offices
Suite 201

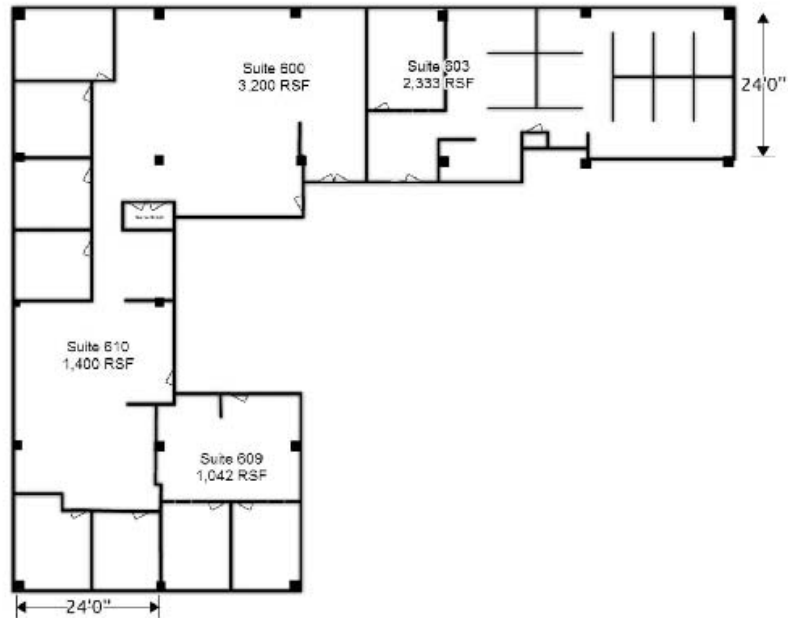


Floor Plans

6th Floor

900 Lafayette, Santa Clara, CA

Commerce Plaza
6th Floor



floor  planner