



PRIME OFFICE SPACE FOR LEASE

Sunnyvale Financial Plaza

333 W. El Camino Real • @ Mathilda Avenue • Sunnyvale, CA 94087

High Identity Location!

Ground Floor Suite With Signage!



AVAILABLE SPACES

Suite 180	4,575 Square Feet Rentable	Available Now
Ground Floor “Quasi-Retail” Office Space with separate entry, illuminated building and monument signage! (Divisible to 2,144-2,440 SF). Ideal for professional/service office requiring exterior illuminated signage.		
Suite 210	2,293 Square Feet Rentable	Available Now
Second Floor – Near elevator, 4 private offices, conference room, lunch-breakroom with sink, open area with 4 cubicles.		
Suite 265	730 Square Feet Rentable	Available Now
Second Floor – Small office improved for medical/clinic or dental office with 3 operatory rooms and reception area.		
Suite 270	2,245 Square Feet Rentable	January 1, 2012
Second Floor – Corner suite, great views, 4 large private offices, lunch-breakroom.		
<i>Suites 265 & 270 may be combined for total of 2,975 Square Feet Rentable</i>		
Suite 330	5,530 Square Feet Rentable	Available Now
Third Floor – Corner suite, top floor, great views! 9 Private offices, 2 conference rooms, open area with 9 cubicles, lunch-breakroom, patio-balcony.		

PROPERTY HIGHLIGHTS

- | | |
|--|--|
| <ul style="list-style-type: none"> ▪ Excellent Sunnyvale Location on El Camino Real ▪ Highly Visible 3-Story Office Building ▪ Easy Walk to popular New Shops and Restaurants ▪ Abundant Parking; some covered and secured. Reserved spaces available. ▪ 5 Blocks to Caltrain-Sunnyvale Station with Bullet Express Service. ▪ Convenient Access to Major Freeways, Expressways. | <ul style="list-style-type: none"> ▪ Attractive Atrium Elevator Lobby, Remodeled Restrooms ▪ Extensive Glassline, Great Views ▪ SBC Fiber Cable DS 3 High Bandwidth Available ▪ Onsite Property Management ▪ Local Responsive Ownership |
|--|--|

For additional information, contact Exclusive Agent:

PAUL BIAGINI DRE #01098992

(408) 331-2300 Ext. 22 • Fax (408) 331-2301

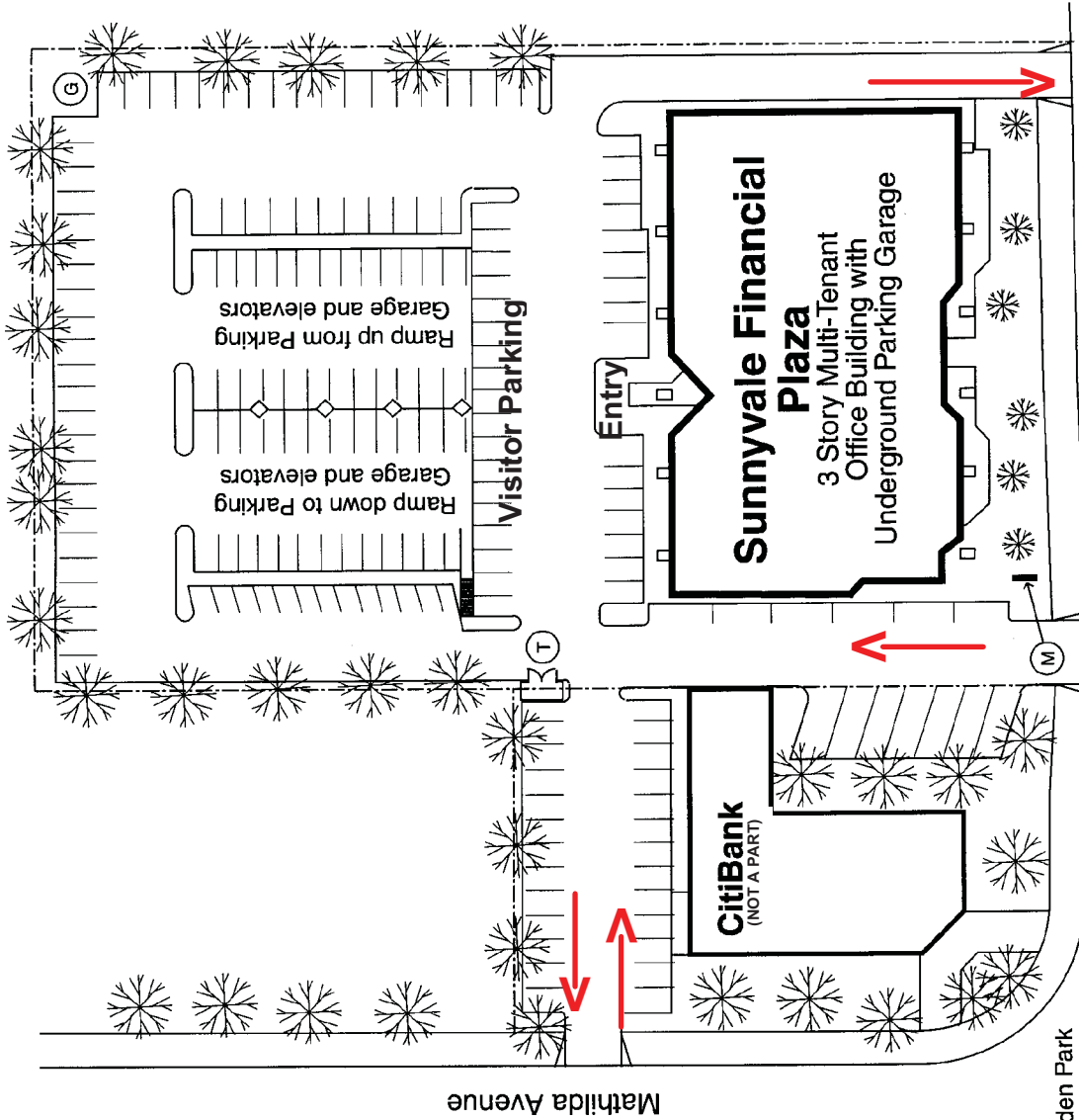
Email: paul@biaginiproperties.com

333 W. El Camino Real, Suite 240 • Sunnyvale, CA 94087-1969



The information contained herein has been given to us by the owner of the property or other sources we deem reliable. We have no reason to doubt its accuracy, but we do not guarantee it. All information should be verified prior to purchase or lease

Sunnyvale Financial Plaza
 333 West El Camino Real
 Sunnyvale, California
 Site Plan

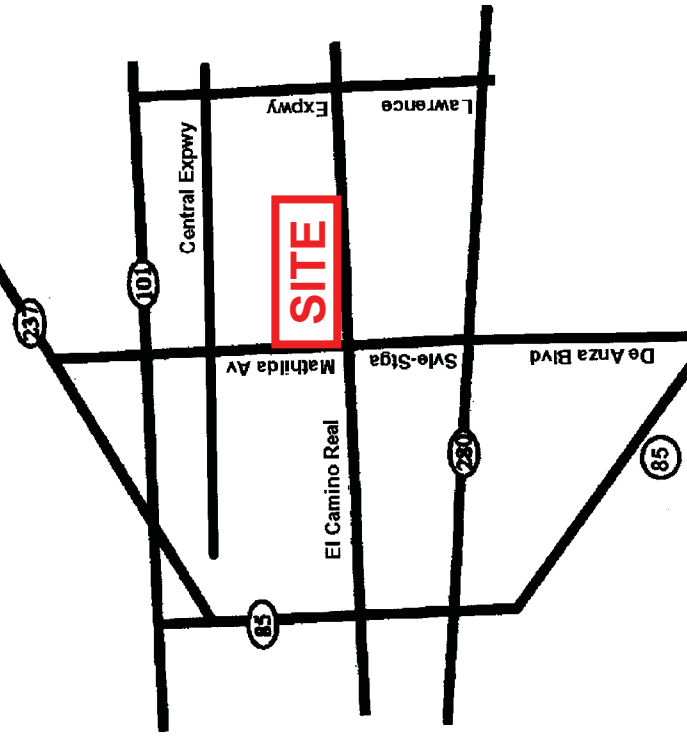


- (G) Garden Park
 - (M) Monument Sign
 - (T) Trash Enclosure
- Property Line

Site plan not to scale and subject to change without notice

CHERRY ORCHARD RETAIL CENTER (across street)

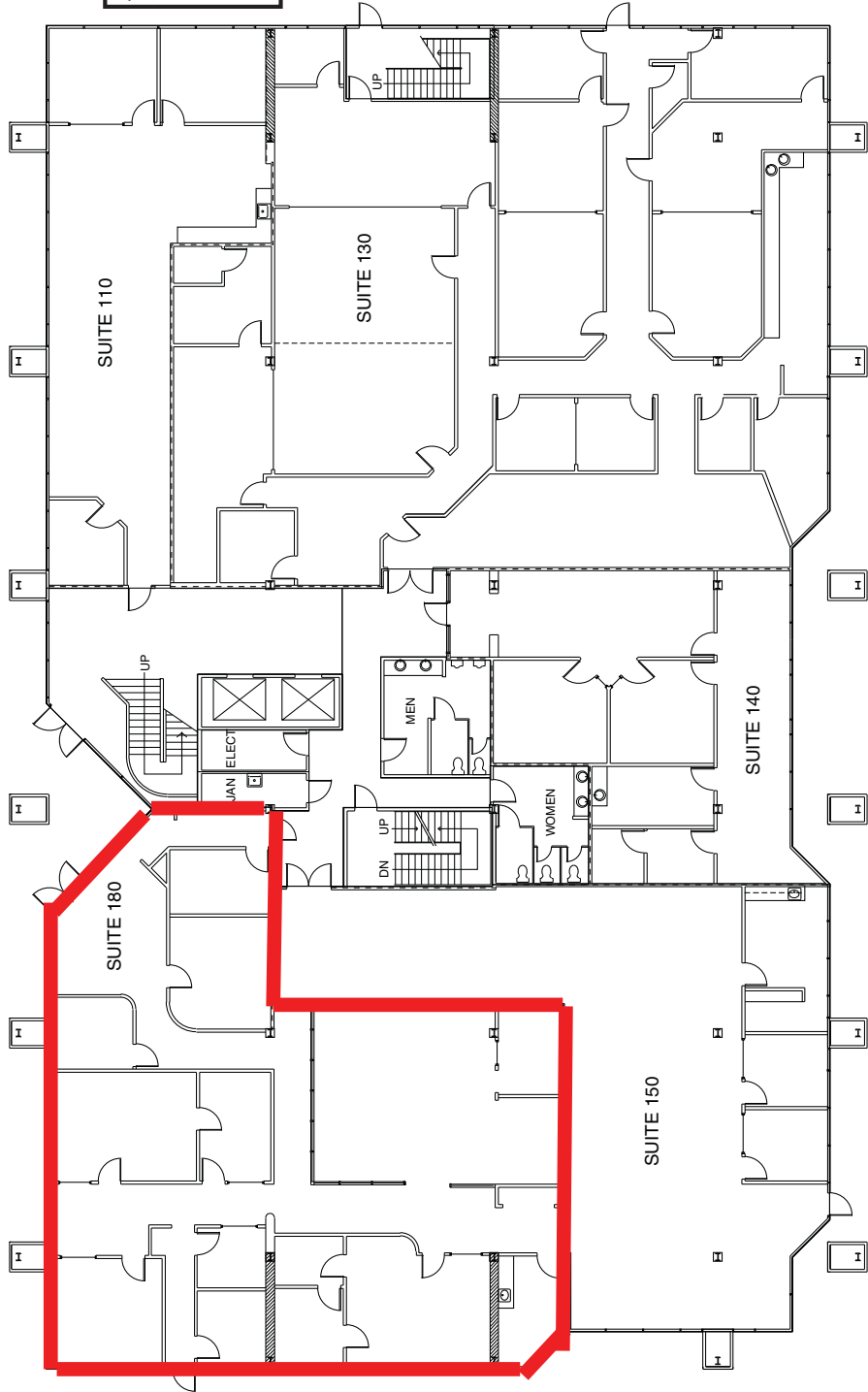
PF Chang China Bistro, Pasta Pomodoro, Chiptole, Olsons Cherry Store, Starbucks Coffee, Luxury Apartments and more....



333 W. El Camino Real, Suite 240
 Sunnyvale, CA 94087-1969
 Phone (408) 331-2300
 Fax (408) 331-2301

Sunnyvale Financial Plaza
333 West El Camino Real
Sunnyvale, California
First Floor Plan

AVAILABLE SPACE
Suite 180: 4,575 Square Feet Rentable
(Divisible - see attached)

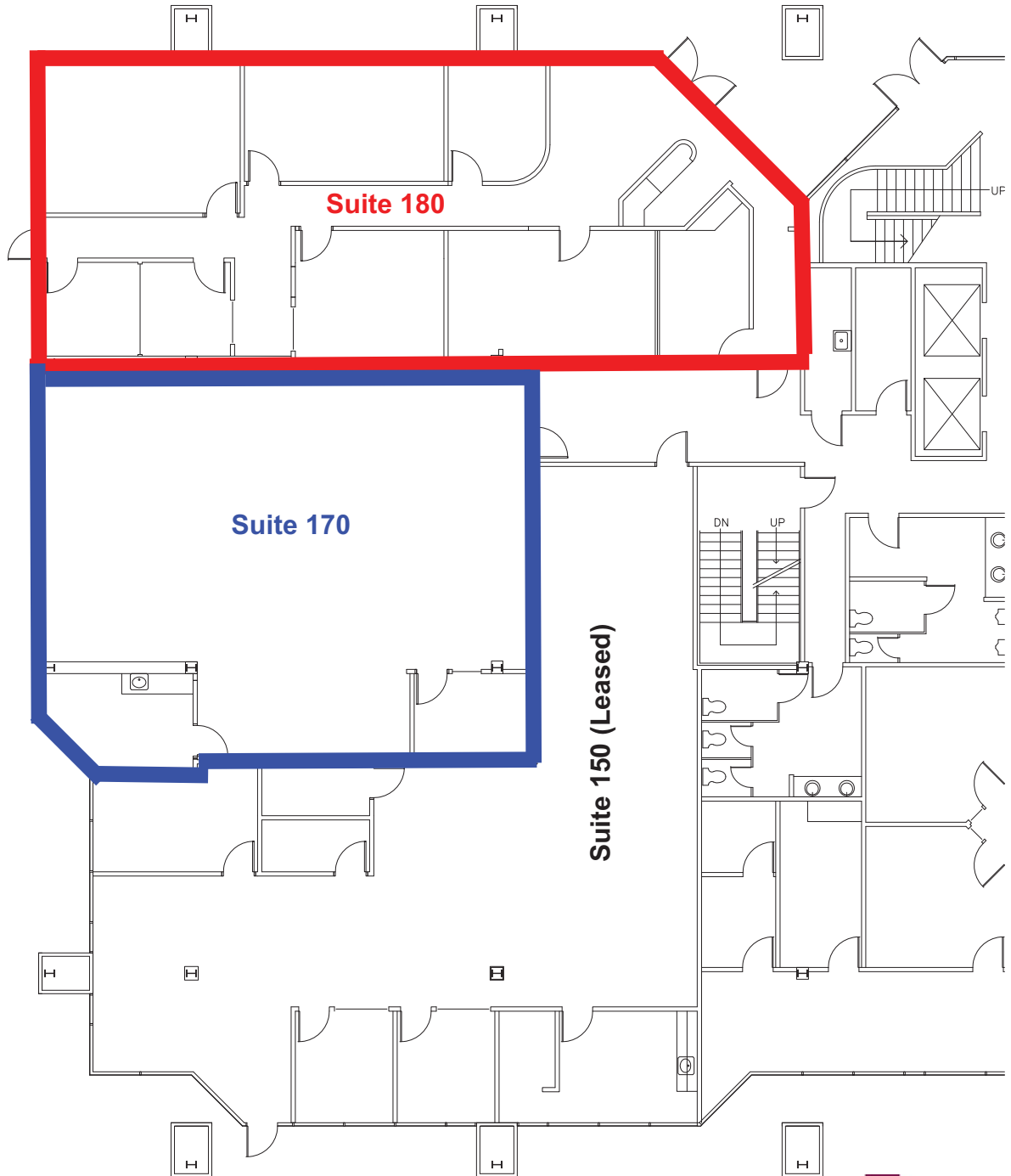


333 W. El Camino Real, Suite 240
Sunnyvale, CA 94087-1969
Phone (408) 331-2300
Fax (408) 331-2301

Site plan not to scale and subject to change without notice

**Sunnyvale Financial Plaza
333 West El Camino Real, Suite 180 Division Plan
Sunnyvale, CA 94087**

(please allow 30 to 60 days to complete division)



**Divisible (please allow 30 to 60 days)
Suite 180: 2,440 Square Feet Rentable
Suite 170: 2,144 Square Feet Rentable**

Rev. 01/11/2011

The information contained herein has been given to us by the owner of the property or other sources we deem reliable. We have no reason to doubt its accuracy, but we do not guarantee it. All information should be verified prior to purchase or lease. All dimensions are approximate only.



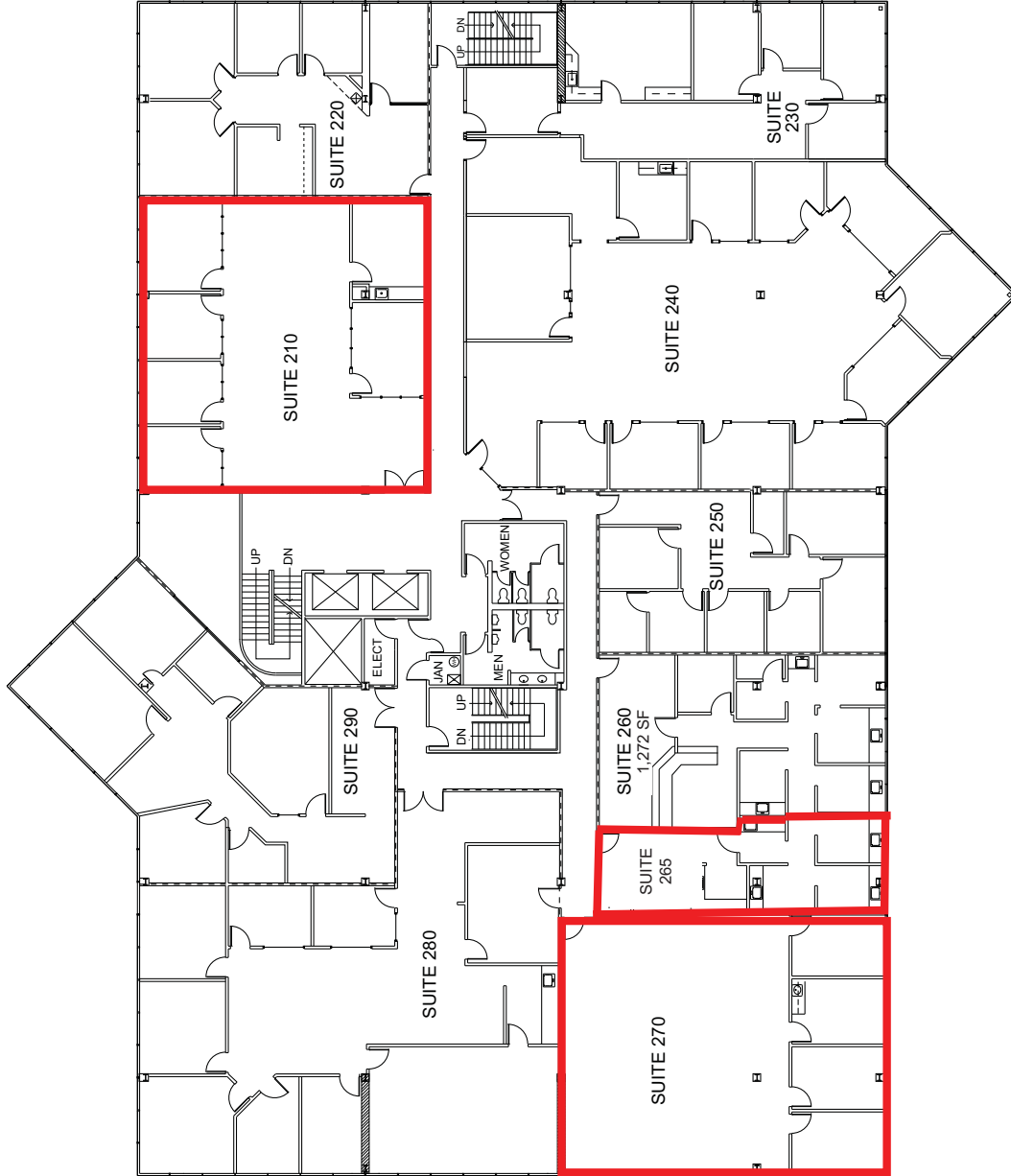
333 W. El Camino Real, Suite 240
Sunnyvale, CA 94087-1969
(408) 331-2300 Telephone
(408) 331-2301 Facsimile
www.biaginiproperties.com

Sunnyvale Financial Plaza
 333 West El Camino Real
 Sunnyvale, California
 Second Floor Plan

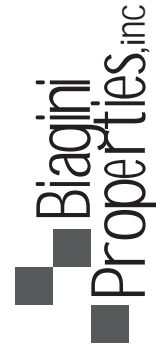
AVAILABLE SPACE

Suite 210: 2,293 Square Feet Rentable
 Suite 265: 730 Square Feet Rentable
 Suite 270: 2,245 Square Feet Rentable

*Suites 265 & 270 May be combined for
 total of 2,975 Square Feet Rentable*



Site plan not to scale and subject to change without notice

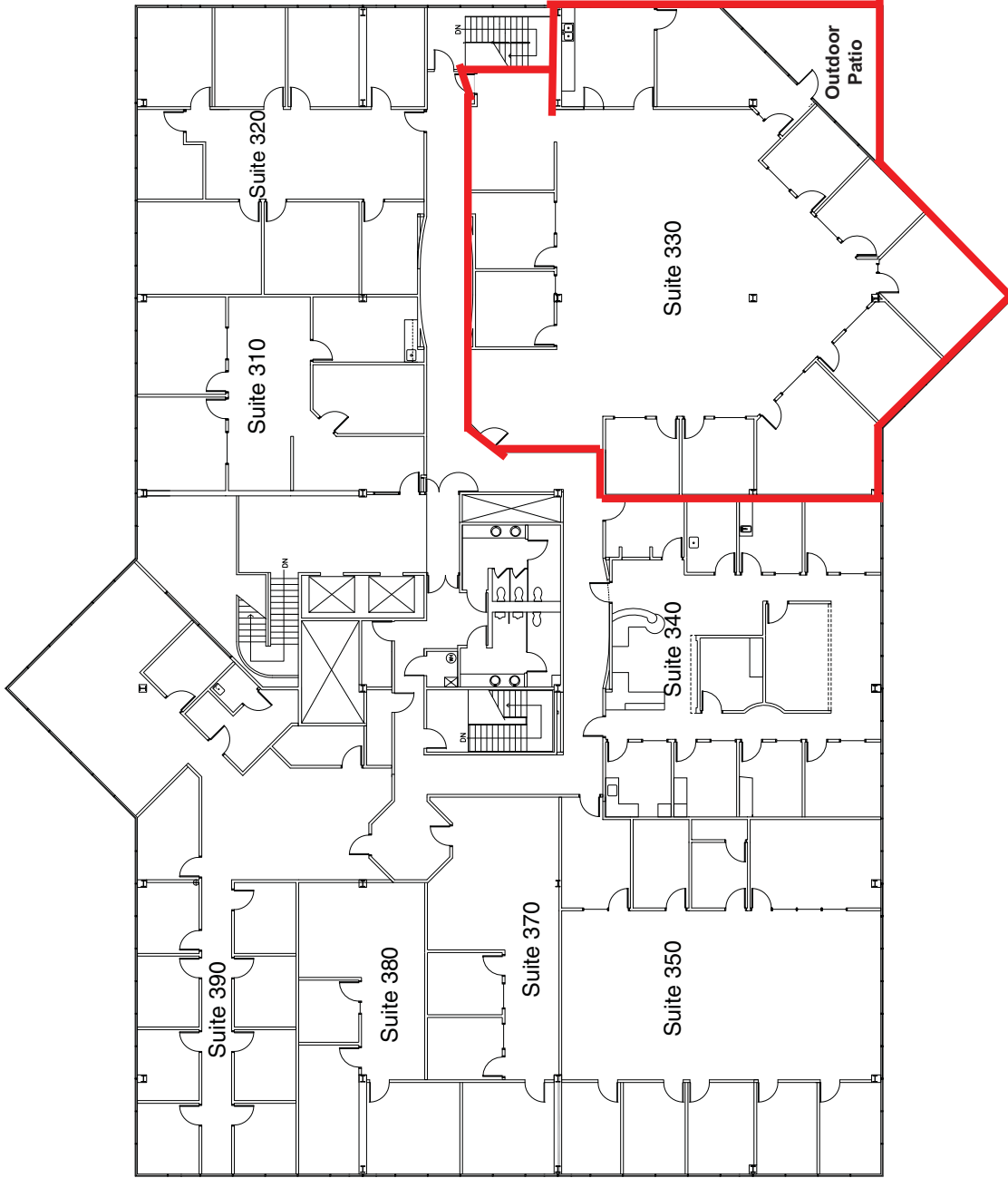


333 W. El Camino Real, Suite 240
 Sunnyvale, CA 94087-1969
 Phone (408) 331-2300
 Fax (408) 331-2301

Sunnyvale Financial Plaza
333 West El Camino Real
Sunnyvale, California
Third Floor Plan

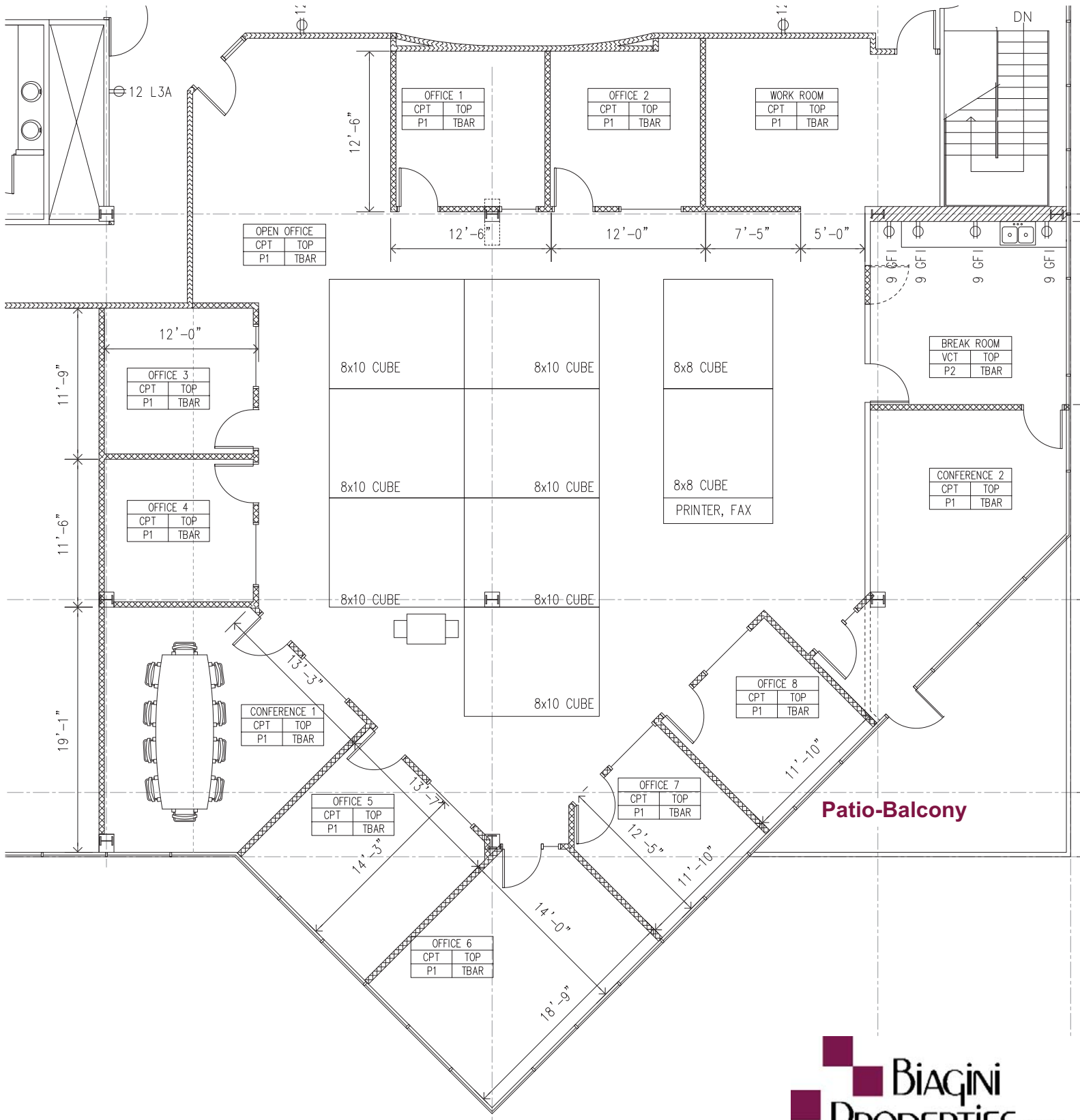
AVAILABLE SPACE

Suite 330: 5,530 Square Feet Rentable



333 W. El Camino Real, Suite 240
Sunnyvale, CA 94087-1969
Phone (408) 331-2300
Fax (408) 331-2301

Sunnyvale Financial Plaza
333 West El Camino Real, Suite 330
Sunnyvale, CA 94087
± 5,530 Square Feet Rentable



Rev. 04/07/2011

The information contained herein has been given to us by the owner of the property or other sources we deem reliable. We have no reason to doubt its accuracy, but we do not guarantee it. All information should be verified prior to purchase or lease. All dimensions are approximate only.

333 W. El Camino Real, Suite 240
 Sunnyvale, CA 94087-1969
 (408) 331-2300 Telephone
 (408) 331-2301 Facsimile
www.biaginiproperties.com

SUNNYVALE FINANCIAL PLAZA
333 W. El Camino Real
Sunnyvale, CA 94087-1969

560 S Murphy Ave, Sunnyvale, CA 94086

333 W El Camino Real, Sunnyvale, CA 94086



Woks On
Tacos
Jalapa



Sunnyvale-Saratoga Road

S. Mathilda Avenue

Sunnyvale
Tennis
Center

© 2011 Google

